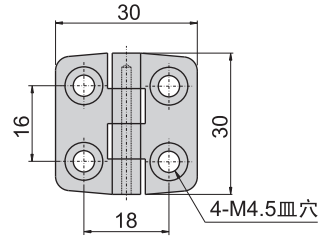
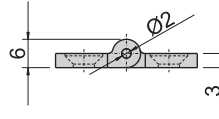


CKB-1065-5(S)



CKB-1065-5(P)

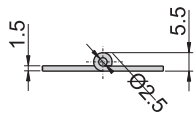
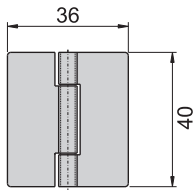


材 质	不锈钢(SUS 304)
表面处理	(S)镜面研磨 (P)砂面黑色耐刮面

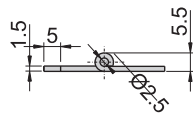
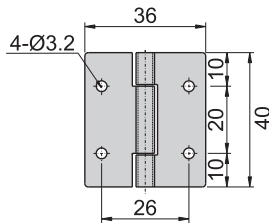
铰 链

铰
链

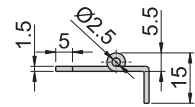
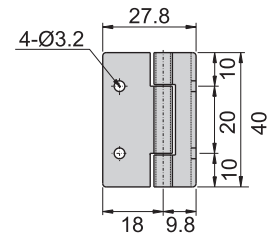
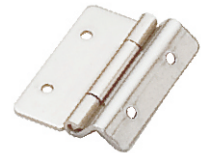
CKB-122-1



CKB-122-2

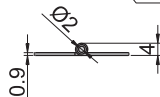
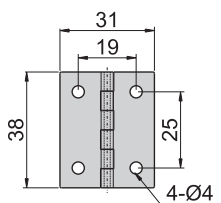


CKB-1222

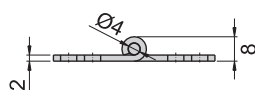
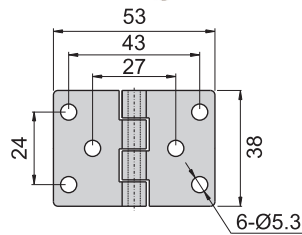
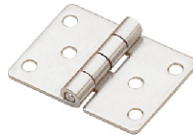


材 质	不锈钢(SUS 304)
-----	--------------

CKB-1510



CKB-1520



材 质	不锈钢(SUS 304)
-----	--------------