

HPL-100(P)



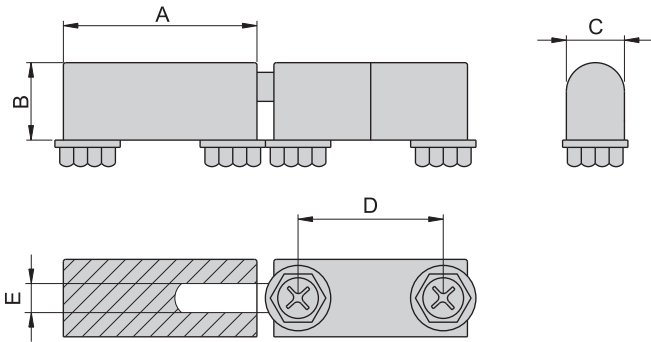
HPL-80(B)



HPL-60(S)



HPL-42(B)



产品型号	A	B	C	D	E
HPL-100	50	20	16	34	Ø8
HPL-80	40	16	12	30	Ø6
HPL-60	30	13	10.5	20	Ø5
HPL-42	21	13	10.5	12	Ø5

材 质	锌合金 (ZDC)
表面处理	(S) 镀铬---光面
	(B) 电著涂装黑色

铰
链

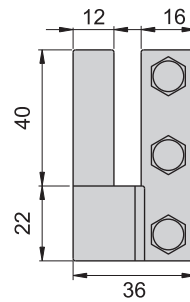
HPL-2-R



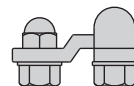
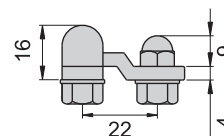
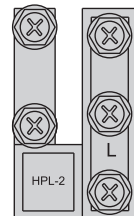
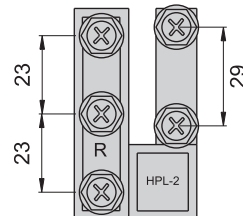
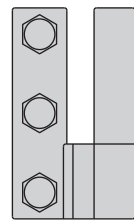
HPL-2-L



HPL-2-R



HPL-2-L



材 质	锌合金 (ZDC)
表面处理	电著涂装黑色
备 注	分左右, 右开