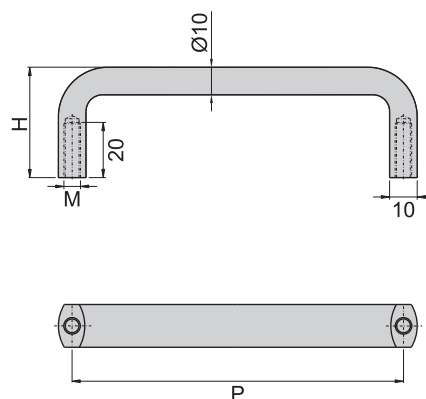


AL-20-100(S)



AL-20-100(B)



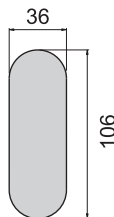
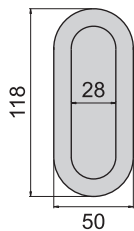
产品型号	中心孔距	高度	M
AL-20	100	40	6
	110		
	120		
	127	36	5
	150	50	6
	188		
	238		
	288		
320	60		

材 质	铝
表面处理	(S) 砂银 (B) 砂黑

拉手取手

## 船形取手

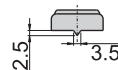
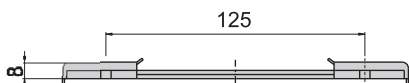
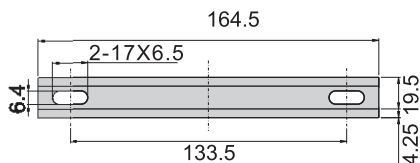
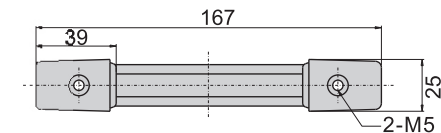
CKA-122



材 质	橡胶原色
-----	------

## 皮带取手

CKA-164



材 质	皮带---PVC (黑色)
	固定头---铁制黑色